



INTERNAL PHOTO AND VIDEO
ASSESSMENT PROGRAM



Introduction

The Warlander Studbook Society (WSS) completed the third revision of the studbook appendixes in April 2022. The aim of the revision is to bring a universal 'World Standard' to the Warlander race by introducing an internal Assessment mechanism that can qualify and award those horses who meet the Breed Standard, regardless of where you are in the world.

The second reason is to give the 'consumer' peace of mind that they are purchasing a horse which meets the breed standard, and lastly, to assist breeders so they receive qualified feedback.

The revision brings WSS more in line with the mother studbooks for the purebred base breeds and now includes Foal Book Appendixes for both the Main and Auxiliary Studbooks. The new studbook system can be viewed on our website.

There is no discrimination (all horses meeting requirements can be registered*) and everyone including presently registered horses have the opportunity to upgrade their horses status or gain premiums and breeding approval status through the internal and external Assessment Programs.

WSS offers two types of Assessment - Face to face (Keuring) which is done through our external bodies in Europe, USA and Australia. There is no age restriction on horses being evaluated by external testing, however, horses under three years of age can not receive breeding approval.

Breeding Approval can only be granted for horses at three years of age, and WSS now offers members the choice of having their horse assessed through the Photo and Video Assessment so they can advance through the studbook, from Foal Book to Main Studbook or upwards through the Appendixes.

The WSS internal Assessment program is carried out by a panel of six qualified Assessors who work for the studbook. Three Assessors judge each horse and they do not know who owns the horse nor the country it is from so the system is fair and transparent.

** Please see each countries individual rules if applicable for Membership rules and Code of Conduct*

Rules for Assessment

WSS will not accept horses for judging if they are in poor condition, have obvious health issues, are unsound or are presented in a way that is unsuitable to judge (both presentation and supply of material).

You must be a current member of the Studbook in order to have your horse assessed (external and internal).

THE SCORE SYSTEM

The average score (1 being the lowest - 10 being the highest) is calculated from the scores of three Assessors and covers the following criteria:

- 1) Breed Standard (type)
- 2) Quality of conformation
- 3) Correctness of gait
- 4) Quality of Walk
- 5) Quality of Trot
- 6) Quality of Canter
- 7) Overall impression
- 8) Pedigree
- 9) Presentation

Breeding Approval and Premiums are reached at the following scores:

Suitability to Breed (M-SBT)	6.0 Points
Ints Bronze Premium	7.1 Points
Silver Premium	7.5 Points
Gold Premium	8.1 Points

Main Studbook horses who pass Assessment can receive the following:

Bronze, Silver or Gold Premium
M-STB – Suitability to Breed
M-QBA – Qualified Breeding Approval (mares)
M-QBA – Qualified Breeding Approval (Stallions)

Auxiliary Studbook horses who pass Assessment can receive the following:

Bronze, Silver or Gold Premium
A-STB – Suitability to breed

Horses who fail assessment will remain in their respective Appendix

AFTER THE ASSESSMENT

Once Assessment is completed all horses who 'pass' will receive a final report giving you the average score of the three assessors across all categories plus comments.

Horses who pass Assessment will receive 'new' Warlander papers documenting their status (Appendix status, premiums and breeding approval).

Horses who fail Assessment will retain their original Warlander papers however they do have the opportunity to be assessed again unless the studbook gives feedback to the contrary.

All results of the Assessment will be recorded on our Online Genealogy including images of the horse, the Appendix they are registered in, premiums and breeding approval and fail.

This 'transparency' will enable purchasers to make more informed decisions and will in the future show clearly the breeding lines that are contributing to the betterment of the breed.



Assessment Score Form

Sex: _____ DOB: _____

CHECK APPROPRIATE BOX WITH AN X AND PUT SCORE IN BOXES

CATEGORIES	EXCELLENT	GOOD	AVERAGE	FAIR	POOR
Head and Head/Neck connection					
Neck and Neck/Shoulder connection					
Withers, Shoulder & Point of Shoulder					
Chest, Thorax & Abdomen					
Back & Loin					
Croup & Tail					
Front Legs & Hooves					
Hind Legs & Hooves					
Breed Standard / Type					
Overall Impression					

THE SCALE OF MARKS IS AS FOLLOWS:

*DECIMALS CAN BE USED

- 10 EXCELLENT
- 9 VERY GOOD
- 8 GOOD
- 7 FAIRLY GOOD
- 6 SATISFACTORY
- 5 MARGINAL
- 4 INSUFFICIENT
- 3 FAIRLY BAD
- 2 BAD
- 1 VERY BAD
- 0 NOT EXECUTED

WALK
(SCORE 1-10)

TROT
(SCORE 1-10)

TOTAL WALK/TROT
(SCORE 1-10)

DECIMALS
MAY BE USED

COMMENTS:

.....

.....

.....

.....

.....

.....

.....

.....

.....

Office Use:	Accumulated Score: Conformation	TOTAL SCORE: <input type="text"/>
	Accumulated Score: Movement	
	Pedigree (1-10) WSS:	

PHOTOGRAPHIC AND VIDEO ASSESSMENT – HOW TO

STEP ONE: Booking the Photo/Video Assessment

Email registrar@warlanderstudbooksociety.com.au with the name of the horse you would like assessed. The horse must be registered in the name of the person requesting the Assessment.

You will then receive an email with a 'link' to a DROPBOX folder. Install the Dropbox App which you can find at <https://www.dropbox.com/basic>. This service is free of charge and is where you upload photo and video files.

Under no circumstances are videos and images to be sent to the studbooks email address.

Payment can be made via our PayPal link on the Forms and Payment page of our website. Once payment and material is received you will be placed in the Assessment Queue and we will keep you in touch with progress. The cost of one full assessment is \$185 AUD per horse.

**In cases where insufficient material is supplied, WSS will alert you to resubmit. If in the end, material is still insufficient we will have no choice but to assess the horse on what has been supplied.*

STEP TWO: Supply of Photos/Videos

Photo Requirements: High Resolution JPEG images no more than 4 MB in file size each

VIDEO Requirements: MP4

Presentation for Photographs: Either free, plain halter or bridle. No boots or bandages with the horse clean and well groomed. If the horse has an abundant mane, ensure the neck is visible on that side.

Presentation for Video's: Plain halter or bridle for in hand workout. Free for loose workout. No boots, bandages with the horse clean and well groomed.



PHOTOGRAPHS – FOUR IMAGES REQUIRED

Front: Have the horse standing with legs straight and wide apart, with the head raised so that the chest and the straightness of the legs can be viewed. A slight $\frac{3}{4}$ on shot is also suitable.

Sides both left and right: The horse must be standing square and straight on a hard even surface. The left fore slightly in front and the left hind slightly behind. The body weight should be evenly placed. The head is held in a natural position slightly inverted towards the camera or straight is acceptable.

Rear: Have the horse standing square with legs straight and wide apart. If the tail is abundant, then please tie up so that the limbs can be viewed.

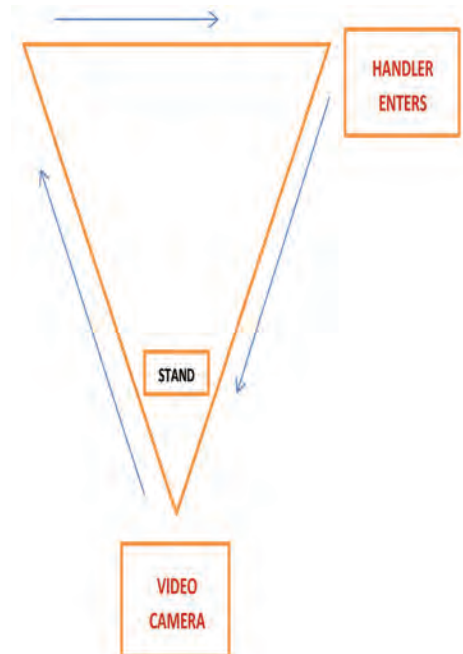
VIDEO ONE - IN HAND WORKOUT

The evaluation is done on a triangle that is approximately 18m x 18m x 18m. The video is filmed from one corner of the triangle and the handler travels to the right at the horse's left shoulder carrying the rein(s) in the right hand and whip in the left hand if required. A further handler can be used behind the horse to encourage it forward.

Stand Side On: First enter the triangle and place the horse sideways to the video taker giving sufficient time in order to assess the horse. Walk the horse back to 'handler enters' and start the workout.

The Walk: The horse is walked energetically on a straight line following the shape of the triangle. There is no need to stop and turn at each angle of the triangle, the idea is to maintain rhythm and forward motions so use the triangle as a guide only and go wide enabling your horse's pace to be fluid and rhythmical.

The Trot: When presenting the horse at trot the handler should gather the rein(s) into the right hand so that they can run freely with the horse just on a contact but without hanging on to the reins, as this will bend the horse to the outside, shorten its stride and disturb its natural movement. The handler should run in line with the horse's shoulder, concentrating solely on the horse. The horse should move freely and energetically into the bridle, and willingly obey the voice aid. Again, just use the triangle as a guide, travel wide around the corners, and ensure that your horse moves forward and shows itself to the best of its ability.



An excellent resource to assist you with the triangle workout can be found at
<https://www.youtube.com/watch?v=On7BUI0G0pl>

VIDEO TWO - LOOSE ASSESSMENT



The evaluators will also assess your horse loose so that they can see free movement in trot, canter and even gallop (which is not mandatory) plus changes of direction with the horse in a relaxed manner.

This is best done in a square or rectangular fenced space (paddock or arena) and suggested no bigger than 20 x 40 so that the horse can be viewed on the video (not a spec in the distance).

TIPS FOR GETTING THE BEST IMAGES

For the photographs choose an area with a hard and even surface and a plain background.

Do not submit images of horses in long grass or heavy sand (so their feet are not visible), and stay away from distracting backgrounds.

Lighting needs to be taken into account as it is hard to properly assess images that are dark and full of shadows. No dark pictures will be accepted.

For the photographs, the main thing is that your horse is standing square and is shown in its entirety (no cut off feet, ears etc.). Placing the horse by the side of a building or a fence line often helps.

For side on photos, aim to have the legs closest to the photographer perpendicular to the ground. You can then place the other front leg slightly back, and the other hind leg slightly forward. It is often easier to walk the horse forward onto the 'mark' where you want to take the picture than backing them onto it.

Ensure the head is straight, but slightly turned inward is also acceptable. Ideally, you want the head and neck carriage to be relaxed – not high nor low.

If you have an extra person (besides the handler) it is advisable to have some props to get the horses attention such as plastic bag, something crinkly, can with pebbles etc., or you can just jump up and down and make goofy sounds.

TIPS FOR GETTING THE BEST VIDEOS

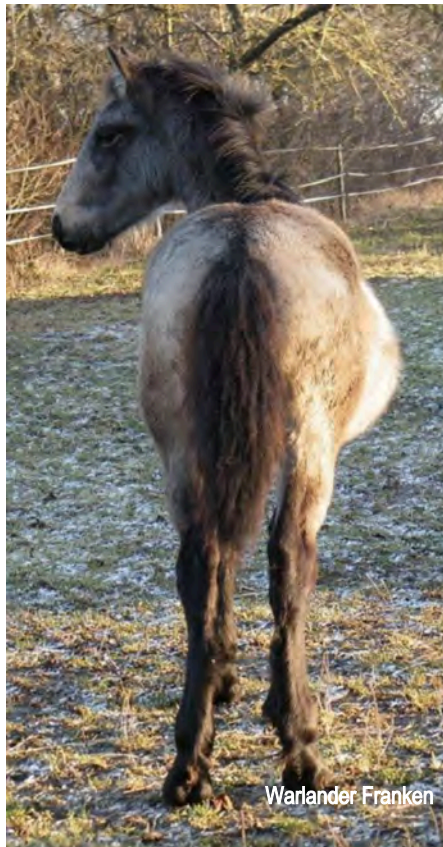
A safe, flat, fenced in square or rectangle is best and we recommend no bigger than 40 x 20m otherwise the horse will be too small in the video at a distance.

Ensure there is no long grass or heavy sand so that the feet are visible and that the video is clear (lighting/shadows).

Ensure that the video taker remains stationary (as per diagram example). A tripod or such is recommended.

If your horse is tense and hurried, you are advised to stand quietly until he/she settles before the loose assessment. We do not want to see 'tail in the air' excited horse which will not show proper movement.

SUFFICIENT EXAMPLES



INSUFFICIENT EXAMPLES



Top Left: Shadows

Top Right: Grass covering feet

Bottom Left: Photo taken from wrong angle (rear) - distracting background

Bottom Right: Grass covering feet, photo taken from wrong angle (front)



E: registrar@warlanderstudbooksociety.com.au
www.warlanderstudbooksociety.com.au